

NIKKEN TURNING TOOL FOR MULTI-TASKING MACHINE

NEW SQUARE TOOL HOLDER & SIDE LOCK HOLDER

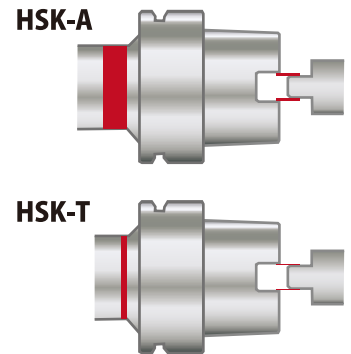
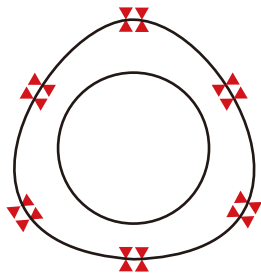
NEW



HIGH ACCURACY, RIGIDITY NIKKEN MILL, TURN TOOLING SYSTEM

BEST SOLUTION FOR MULTI-TASKING

2 TYPES OF TOOL SHANK



High accurate, high rigid polygon taper shank (ISO26623)

- ◆ Ideal face contact between 1/20 taper and flange
- ◆ Accuracy: high repeatability & positioning accuracy
- ◆ Rigidity: high flexural & torsional rigidity

HSK-T tool shank, perfectly interchangeable with milling type HSK-A shank (ISO12164-3, JISB6064-3)

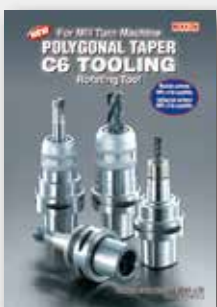
- ◆ Advanced face contact system optimized for turning
- ◆ Accuracy: strict fitting tolerance of drive-key
- ◆ Rigidity: controlled tool length optimized for turning

Deliver a steady stream of both turning tools and milling tools

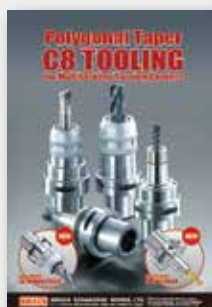
TURNING TOOL

NEW SQUARE TOOL HOLDER	45 degree	C6 HSK-63T
	90 degree	C6 HSK-63T
	180 degree	C6 HSK-63T
NEW SIDE LOCK HOLDER		C6 HSK-63T

Refer to the following brochures for other tools.



C6 TOOLING



C8 TOOLING

MILLING TOOL

* Refer to C6 tooling, C8 tooling brochures.

● SIDE LOCK HOLDER	Coming Soon	C6 HSK-63T
● FACE MILL ARBOR (FOR HIGH FEED OIL-HOLE CUTTER)	Coming Soon	C6 HSK-63T
● MILLING CHUCK		C6/C8
● SLIM CHUCK		C6/C8
● MAJOR DREAM MILLING CHUCK		C6
● MAJOR DREAM HOLDER		C6
● MAJOR DREAM PRO ENDMILL		C6
● MODULAR TYPE BORING HEAD		C6

TURNING SQUARE TOOL HOLDER

All tools are anti-rust treated.

45
degree



POLYGON TAPER C6

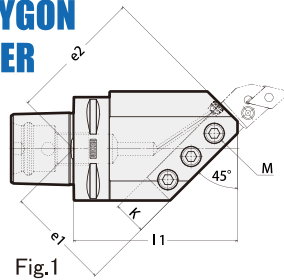


Fig.1

Layout shows left hand tool

HSK-T

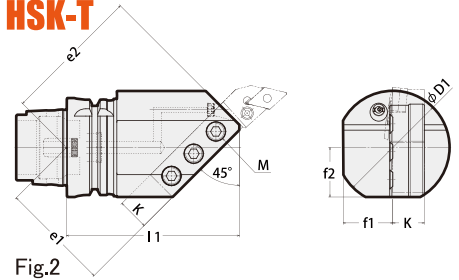


Fig.2

NEW

C6 type shown

TAPER SHANK	CODE No.	HAND	TOOL BIT SIZE	D1	I1	e1	e2	f1	f2	K	M	Fig.	WEIGHT (kg)
C6	C6-45-TH20R-100	R	20	70	100	64	82.5	29	31.5	20	12	1	2.3
	C6-45-TH20L-100	L											
	C6-45-TH25R-110	R	25	80	110	77	85	37.5	35	25			3.1
	C6-45-TH25L-110	L											
HSK63T	HSK63T-45-TH20R-110	R	20	72	110	70	88	31.6	31.5	20	12	2	2.5
	HSK63T-45-TH20L-110	L											
	HSK63T-45-TH25R-120	R	25	80	120	84	92	37.5	35	25			3.3
	HSK63T-45-TH25L-120	L											

90
degree



POLYGON TAPER C6

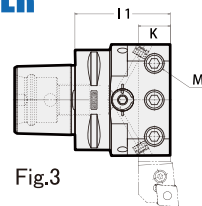
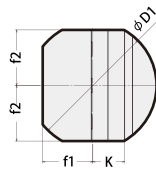


Fig.3



HSK-T

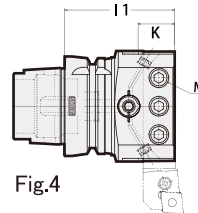
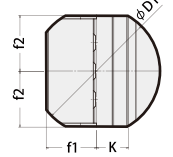


Fig.4



NEW

C6 type shown

TAPER SHANK	CODE No.	HAND	TOOL BIT SIZE	D1	I1	f1	f2	K	M	Fig.	WEIGHT (kg)
C6	C6-90-TH20N-60	N	20	80	60	31.6	35	20	12	3	1.7
	C6-90-TH25N-70		25		70			25			1.6
HSK63T	HSK63T-90-TH20N-70	N	20	80	70	31.6	33	20	12	4	1.9
	HSK63T-90-TH25N-80		25		80			34			25

180
degree



POLYGON TAPER C6

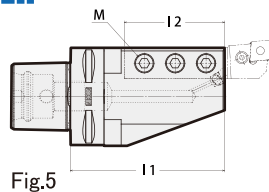
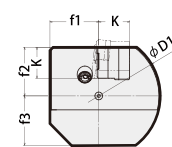


Fig.5



HSK-T

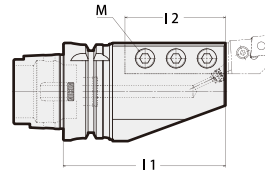
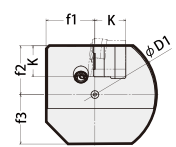


Fig.6



NEW

C6 type shown

Layout shows right hand tool

TAPER SHANK	CODE No.	HAND	TOOL BIT SIZE	D1	I1	I2	f1	f2	f3	K	M	Fig.	WEIGHT (kg)	
C6	C6-180-TH20R-100	R	20	80	100	65	31.6	31.5	32	20	12	5	2.5	
	C6-180-TH20L-100	L												
	C6-180-TH25R-115	R	25		115	75							25	2.7
	C6-180-TH25L-115	L												
HSK63T	HSK63T-180-TH20R-105	R	20	80	105	65	31.6	31.5	32	20	12	6	2.6	
	HSK63T-180-TH20L-105	L												
	HSK63T-180-TH25R-115	R	25		115	75							25	2.7
	HSK63T-180-TH25L-115	L												

TURNING SIDE LOCK HOLDER

All tools are anti-rust treated.



NEW

POLYGON TAPER C6

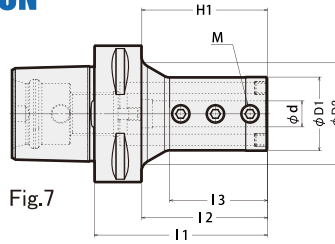


Fig.7

C6 type shown

HSK-T

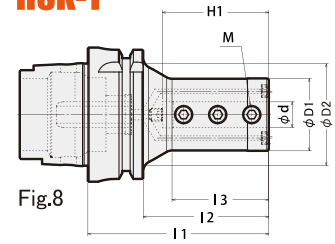
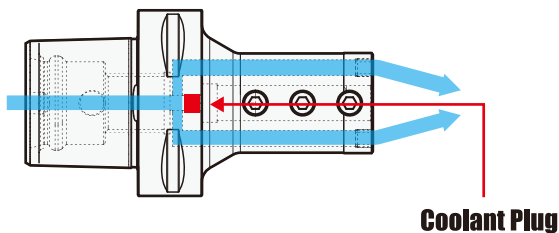


Fig.8

TAPER SHANK	CODE No.	d	D1	D2	I1	I2	I3	H1	M	Fig.	WEIGHT (kg)
C6	C6-SLT8 -70	8	25	40.9	70	48	32.7	46	M6 P=1	7	0.9
	C6-SLT10 -70	10	29	42					M8 P=1		1.0
	C6-SLT12 -80	12	34	47	80	58	45.1	58	M10 P=1.25		1.1
	C6-SLT16 -90	16	40	46.4	90	68	59.7	70	M12 P=1.5		1.3
	C6-SLT20 -90	20	50	-	100	78	-	65	M16 P=1.5		1.6
	C6-SLT25-100	25	55	-							75
	C6-SLT32-110	32	64	-	110	88	-	83	M12 P=1.5		2.4
	C6-SLT40-130	40	80	70	130	108	97	98	M16 P=1.5		3.8
HSK63T	HSK63T-SLT8 -75	8	25	42	75	49	32.7	37	M6 P=1	8	1.0
	HSK63T-SLT10 -80	10	29		80	54	41.1	45	M8 P=1		1.2
	HSK63T-SLT12 -85	12	34	47.8	85	59	45.5	50	M10 P=1.25		1.2
	HSK63T-SLT16-100	16	40	54.7	100	74	59.7	65			1.5
	HSK63T-SLT20-100	20	50	-	105	79	-	72	M12 P=1.5		1.8
	HSK63T-SLT25-105	25	55	-							105
	HSK63T-SLT32-115	32	64	62	115	89	83	79	M16 P=1.5		2.5
	HSK63T-SLT40-135	40	80		135	109	103	96			M16 P=1.5

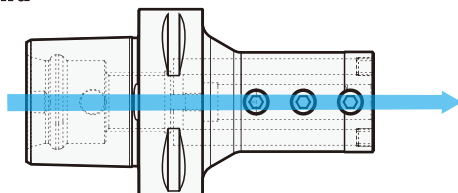
Switching Coolant Way

Side thru with adaptive nozzle



Coolant Plug

Center-thru



Remove Coolant Plug

High Pressure Coolant-thru supported (7 MPa)

- Thanks to special sealing system, high pressure coolant-thru up to 7 MPa is supported.
- Good solution for deep hole non-step drilling.